

The Power of POCT in Improving Patients' Pathways

Alastair Manning
Sales Director UK, Ireland & Benelux

POCT Portfolio Overview



Sofia®

Sofia and Sofia 2 are small, bench-top analysers that take rapid testing to a new level with proven lateral-flow technology and advanced fluorescence chemistry, focusing on infectious diseases and women’s health



QuickVue®

QuickVue’s rapid lateral flow visually-read tests provide accurate results in minutes, allowing for faster diagnosis and treatment across infectious diseases, women’s health, and general health.



Triage®

Triage offers a comprehensive test menu providing the diagnostic answers needed to assist in making rapid, cost-effective treatment decisions for quantitative BNP (CLIA waived for whole blood testing), CK-MB, d-dimer, myoglobin, troponin I and qualitative TOX Drug Screen.



Lyra®

Lyra real-time PCR assays are an open platform solution for high throughput, molecular testing that detects and identifies infectious diseases with minimal steps, easy refrigerated storage, room temperature procedures, and flexible instrumentation.



Solana®

Solana is a simplified molecular testing platform that uses Quidel’s proprietary helicase-dependent amplification (HDA) with fluorescence detection to make diagnosing infectious diseases faster and easier than ever before, without sacrificing performance



Savanna®

Savanna is a multiplex, real-time PCR testing platform, with customizable panels that can run up to 12 unique analytes from a single patient sample in approximately 25 minutes.



Additional Markets Served:

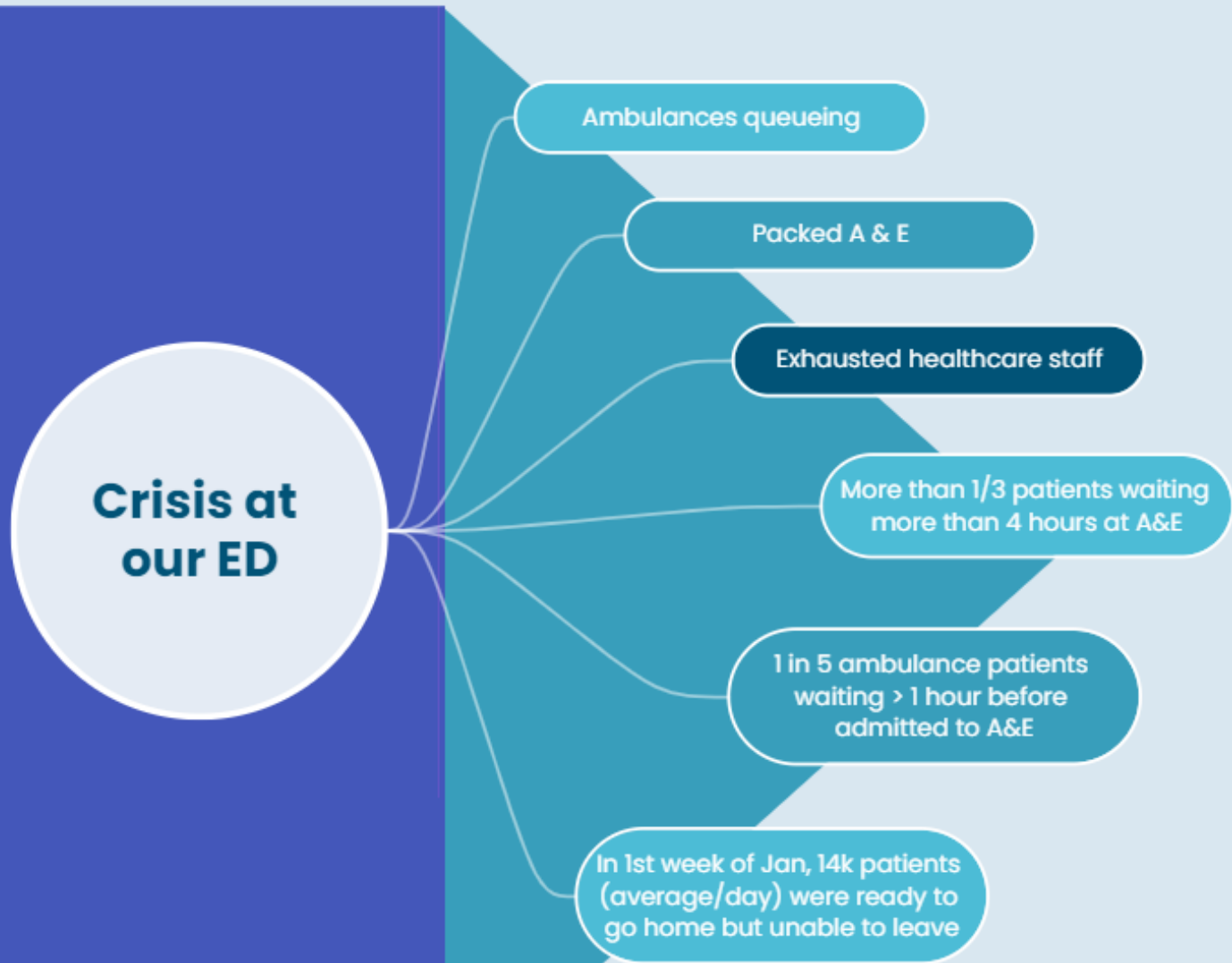
Diagnostic Hybrids (DHI) offers cellular-based virology and autoantibody testing products for clinical and research-based laboratories.

Special Products Group offers a comprehensive portfolio to support autoimmunity/complement system, bone, and renal health diagnostic and research testing needs.

Eye Health serves the ophthalmic and optometric industries with ocular surface testing solutions.

Case Study 1: TriageTrue hsTnI Test

POCT



As reported by BBC
<https://www.bbc.co.uk/news/uk-64185316>

POCT could be one of the solutions to this problem!

Because POCT can improve patients' pathways and ultimately time!

Although acute chest pain is one of the most common reasons to attend the ED, about 50% can be discharged without further hospitalisation with more than 80% of them being discharged with a non-cardiac cause*

*Stepinska J, Lettino M, Ahrens I, et al. Diagnosis and risk stratification of chest pain patients in the emergency department: focus on acute coronary syndromes. A position paper of the Acute Cardiovascular Care Association. European Heart Journal: Acute Cardiovascular Care. 2020;9(1):76-89.



- ▶ **Most patients spend hours in the emergency room waiting for results, occupying places they would not actually need.**
- ▶ **This huge number of accesses causes an overcrowding of emergency rooms and highlights the need for a quick and accurate diagnosis that distinguishes urgent cases from less urgent ones, as well as a rule-out that is as rapid as possible.**

	population	ED accesses/year	Chest pain accesses/year
USA	327 M	130 M	7.1 M
EU	324 M	117 M	9.6 M

The TriageTrue hsTnI Test runs on the Triage MeterPro, a system that is robust and reliable:

- One of the largest cardiac test menus on a point-of-care platform
- Single tests or multi-assay panels
- Results available in 15-20 min (<2 min with tests performed in parallel)
- EDTA whole blood or plasma samples
- Compatible with LIS
- Multiple levels of QC
- No maintenance is needed
- Zero service charge



Western Isles and TriageTrue

Stornoway – Isle of Lewis

Western Isles are the first site to implement Triage True in the UK.

The project includes implementation of TriageTrue in three locations across the Western Isles. This provides access to High Sensitivity Troponin results in a decentralized setting

This move from a conventional Troponin Assay. TriageTrue allows them to bring a 0-1hour Troponin algorithm to their patients, meaning rapid disposition of patients, streamlined use of healthcare resources, alleviating patient stress.

It also bring them inline with ESC Guidelines suggesting the use of the 0/1-Hour Algorithm for rapid rule-out and rule-in of Non-ST-Segment-Elevation Myocardial Infarction (NSTEMI)



Case Study 2: TriageTrue PIGF Test

POCT

The Triage PLGF Test is a rapid, quantitative fluorescence immunoassay, used with the Triage MeterPro.

The test is used to measure maternal circulating PIGF in EDTA anticoagulated plasma specimens.



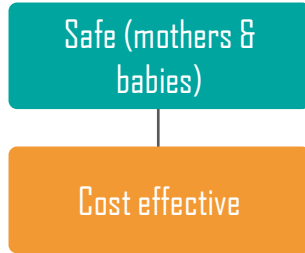
- ❑ Highly specific for PIGF isoform-1
- ❑ Results available in approximately 15 minutes
- ❑ Measurable range: 12-3,000 pg/mL
- ❑ Requires 250 µL of EDTA plasma from maternal blood
- ❑ Runs on the Triage MeterPro
- ❑ Can be used in the laboratory and/or near-patient setting

PARROT intervention trial

Multi-centre trial (11 centres)

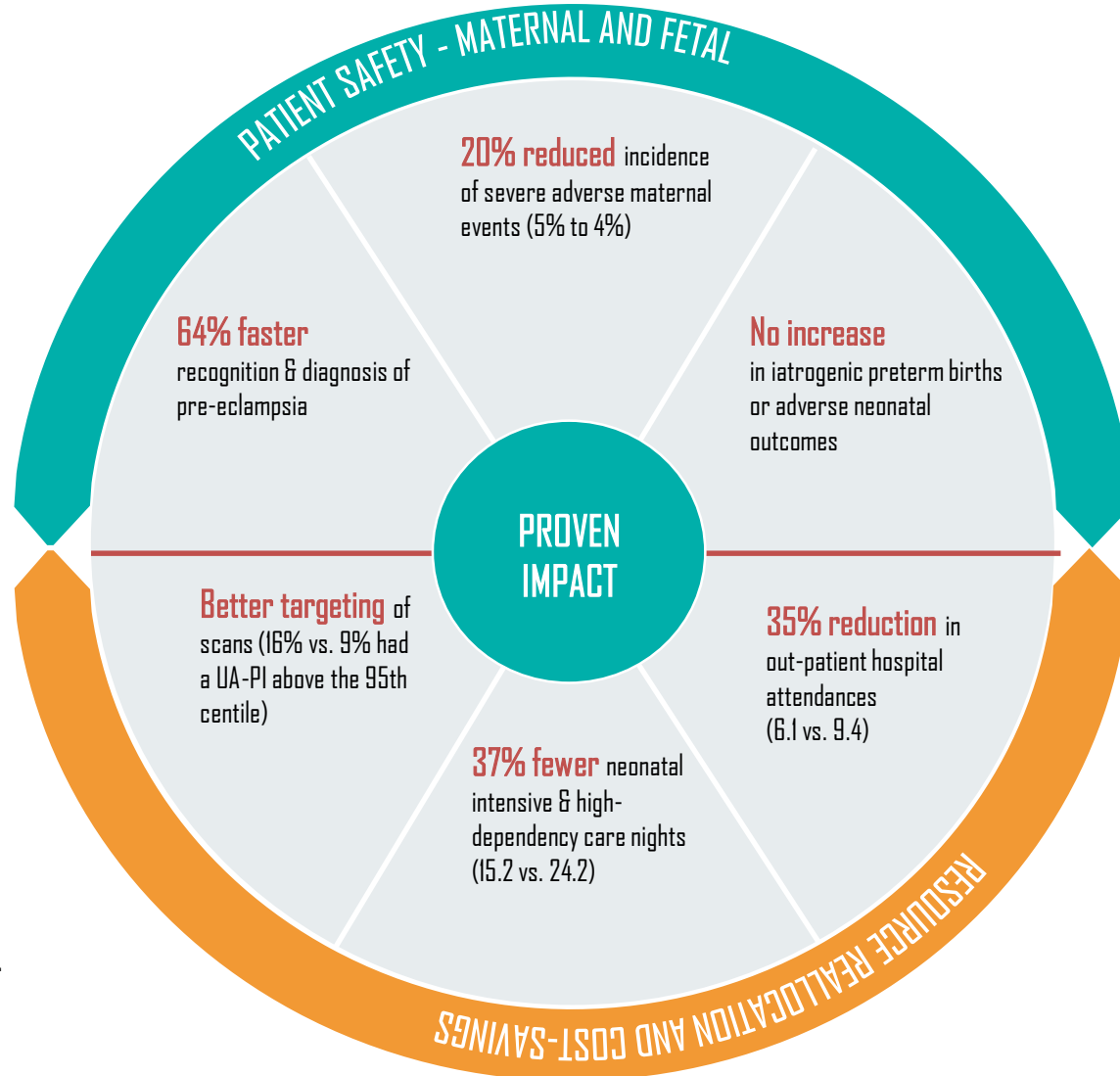
Evaluated in over 1,000 pregnant women

PLGF-guided management pathway



Proven Outcomes:

- Triage PLGF is **safe** for the mother AND baby[‡]
- Triage PLGF is **cost-effective** – saves money and re-allocates resources to the right women[‡]
 - Potential cost saving of £2,891,196 each year across the English NHS
 - Equates to £81,109 savings p.a. for a Trust with 6,000 deliveries p.a.



[‡] Duhig, K. The Lancet. Apr 2019

Wrexham Maelor Hospital and Triage PIGF

Background:

In 2020, at the peak of the COVID-19 pandemic, Dr Lynda Verghese, the lead at the Wrexham Maelor labour ward was struggling to get in-patient beds. Dr Lynda decided to bring in change to improve patient's pathway, to avoid unnecessary hospital admissions.

Labour ward needs:

After meeting and engaging the right stakeholders, the hospital team chose Triage PIGF for the reasons below:

1. Small footprint -they didn't have enough space for the instruments in their Day Assessment Unit (DAU), nearer to patients
2. Time taken to process- only 15 minutes with Triage PIGF, they can't keep too many patients too long at the DAU
3. Easy procedures – results in 3 simple steps (draw blood, centrifuge, drop plasma sample on assay)
4. Training to Band 7 midwives- full support from implementation to training
5. Protocol based on PARROT Trial

Positive impacts:

- Faster clinical diagnosis of pre-eclampsia
- Financial impact in total net savings in 6 months: £34,304

Source: Webinar by Dr Lynda Verghese, Wrexham Maelor on 20th April 2023

Thank you

