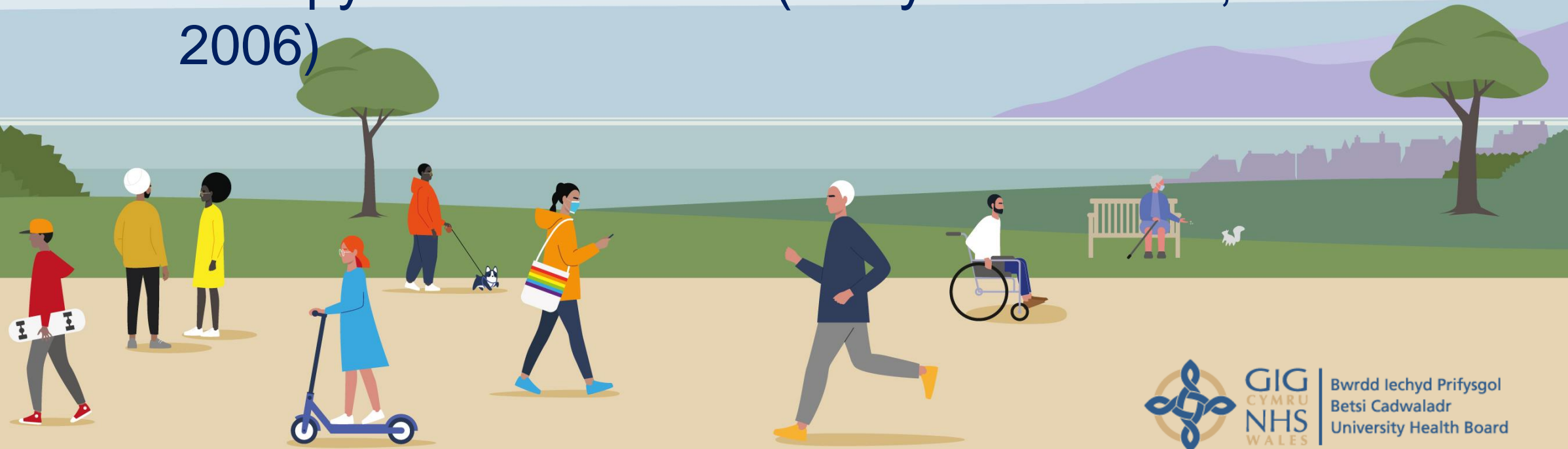


Care Home Pilot Project.

Rachel Owen RMN
BCUHB CAMHS



“The more healthy relationships a child has, the more likely he will be to recover from trauma and thrive. Relationships are the agents of change and the most powerful therapy is human love.” (Perry & Szalavitz, 2006)



Project Brief:

The project was designed to offer Childrens residential care homes mental health training, education and support for young people requiring urgent mental health and social care support in North Wales.



Project Start Date: March 2022

Initial phase covering Central Area of BCUHB only.

4 Care Homes

- Kickstart(Castell Care): Supported living provision in Abergele(Conwy).
- Mayfield(Unique Care): Children's home in Corwen(Denbighshire).
- Tan Y Bryn(Action for Children): Children's home in Rhuddlan(Denbighshire).
- Puffin House(A Star support services): Children's home in Colwyn Bay(Conwy)



Two events were conducted and a consultation was initiated

Service User Feedback received from Voices from Care Cymru

Care Home staff and residents feedback was gathered and compiled.



TRAINING PLAN

Day 1: CORE TRAINING:

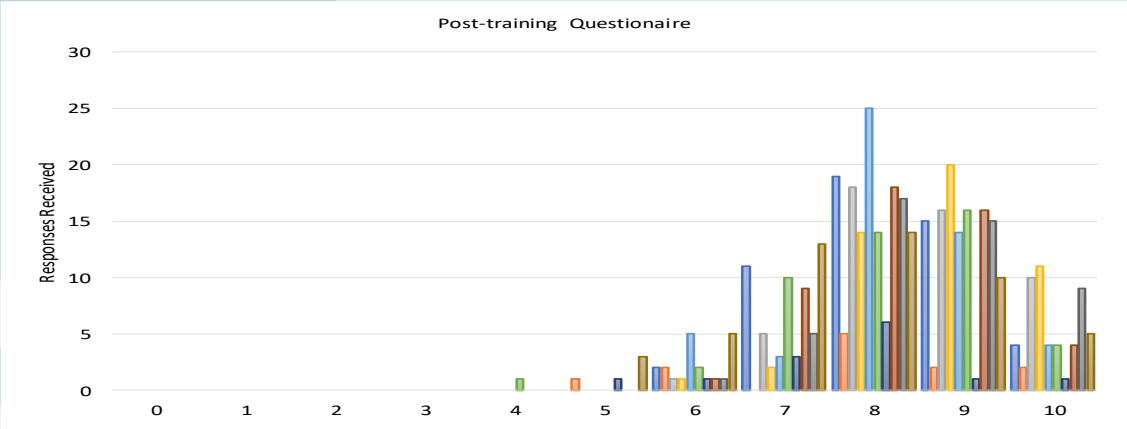
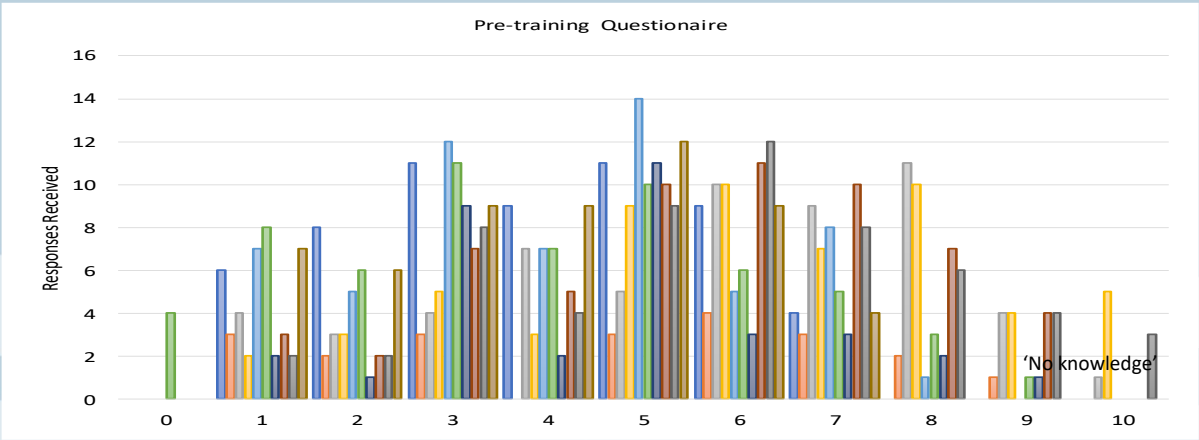
Day 2: TOOL BOX TRAINING:



GIG
CYMRU
NHS
WALES

Bwrdd Iechyd Prifysgol
Betsi Cadwaladr
University Health Board

Evaluation

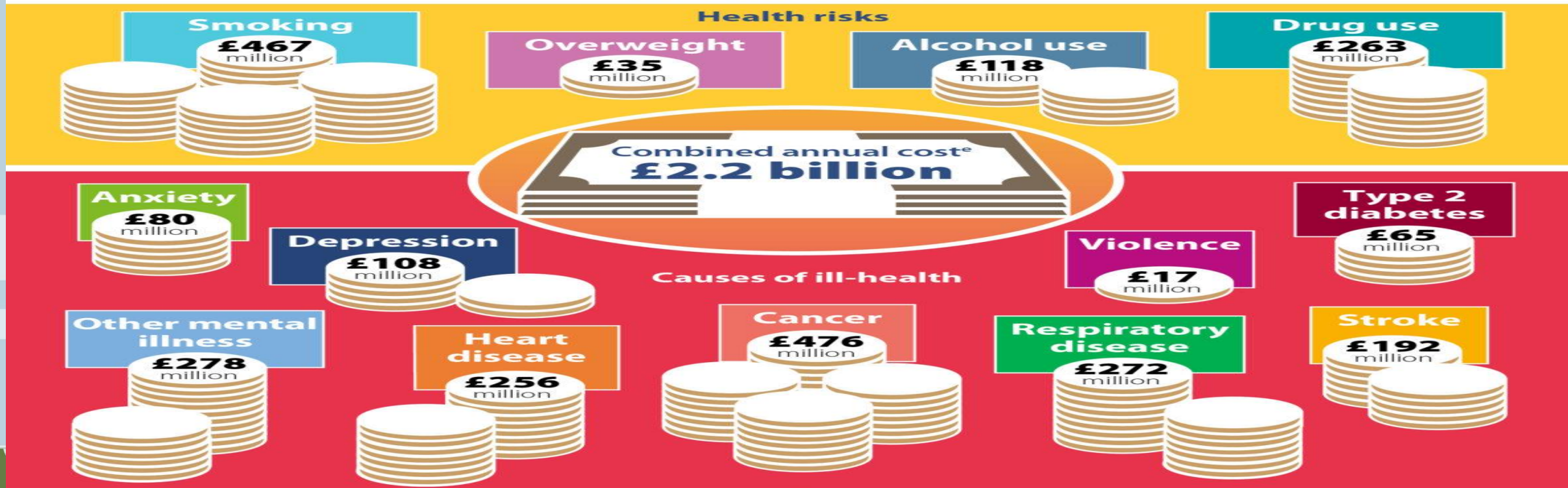


“The most important people making a difference to these traumatised children are not therapists, psychologists or social workers but you, the person who has day to day, intimate care of these children.”

(Dr Amber Elliot 2013)

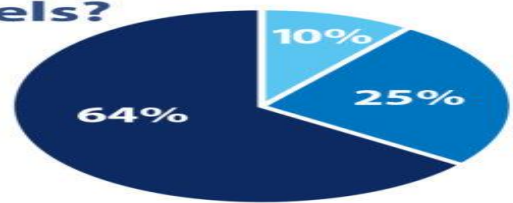


What are the estimated annual financial costs^d attributable to ACEs in Wales?



What proportion of these costs are accounted for by different ACE count levels?

- 1 ACE
- 2-3 ACEs
- ≥ 4 ACEs



A **10%** reduction in ACE prevalence^f in Wales would reduce their combined annual cost by **7%**



^dCosts calculated for 2017; ^eExcludes costs for health risks linked to included causes of ill health; ^f10% reduction applied to each ACE count category, calculated for year 2017.
 Policy and International Health, WHO Collaborating Centre on Investment for Health & Well-being, Public Health Wales, Clwydian House, Wrexham, LL13 7YP.
phwwhocc.co.uk

Programmes for Government Commitments for Children in Care.

PFG Commitment: Explore radical reform of current services for looked after children and care leavers.

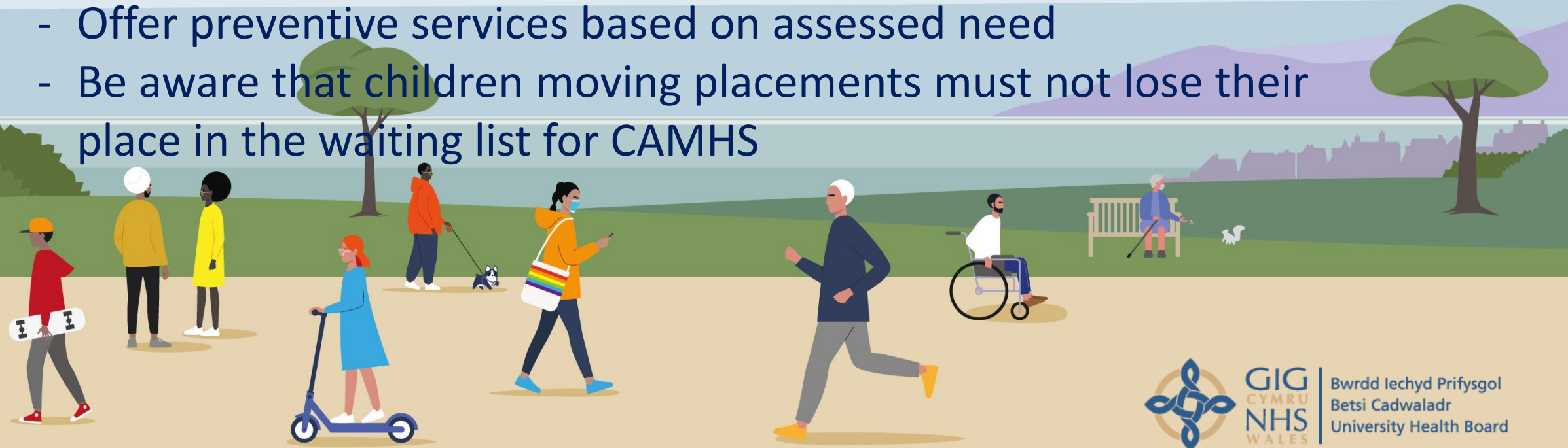
PFG Commitment: Provide additional specialist support for children with complex needs who may be on the edge of care.

PFG Commitment: Fund regional residential services for children with complex needs ensuring their needs are met as close to home as possible and in Wales wherever practicable.



NICE guidelines for Looked after children and young people 2021:

- To avoid delays in care,
- Offer a range of dedicated CAMHS that are tailored to the needs of looked-after children and young people
- Offer preventive services based on assessed need
- Be aware that children moving placements must not lose their place in the waiting list for CAMHS



What's Next?

The Vision!

An enhanced systemic support service

Secure, stabilise, support and sustain placements.

Reduce placement instability & minimise placement breakdown.

Reduce risk of out of county placements/out of region.

Increase systemic collaboration.

Reduce admissions to acute hospital beds.

Reduce inappropriate use/requests for Tier 4 beds.

Improve continuity of care and patient experience.

Increase the knowledge, skills and confidence of staff in residential placements.

Delivery of cost effective services by providing the right service at the right time.



Thank you!



GIG
CYMRU
NHS
WALES

Bwrdd Iechyd Prifysgol
Betsi Cadwaladr
University Health Board